

# Character of Suicide in Regions VII and VIII

Michelle Moskos PhD, MPH  
Epidemiologist II  
Utah Department of Health

Co-Investigator  
Utah Youth Suicide Study

## Nation: Suicide Attempts 2001

- 765, 000 annual attempts in the United States.
- 25 attempts for every death by suicide
- 5 million living Americans have attempted to kill themselves
- 3 female attempts for each male attempt

Note: figures are estimates; no official national data compiled

# Nation: Suicide Completions 2001

- Average of 1 person every 17.2 min. killed themselves.
- Average of 1 old person every 1 hr. 37.5 min. killed themselves.
- Average of 1 young person every 2 hr. 12.4 min. killed themselves.
- Average of 1 young person every 2 hr. 3.7 min. killed themselves.  
(279 young persons below the age of 15 are included...)
  
- 4.1 male deaths by suicide for each female death by suicide.
- Suicide ranks 11<sup>th</sup> cause of death in US for all ages
- Suicide ranks 3<sup>rd</sup> cause of death in US for young persons  
(1<sup>st</sup> Accidents; 2<sup>nd</sup> Homicide)

Source: Arias, E., Anderson, R.N., Kung, H.C., Murphy, S.L., & Kochanek, K.D. (2003). Deaths: Final data for 2001. National Vital Statistics Reports, 50 (15) & 52 (3). Hyattsville, MD: National Center for Health Statistics. [Data to be published in the CD-ROM entitled Vital Statistics of the United States Mortality, 2001.] (p. 91, Table 30. [data are by place of residence] [Suicide = ICD-10 Codes X60-X84, Y87.0] Prepared by John L. McIntosh, Ph.D. for American Association of Suicidology: Suicide State Data Page: 2001, 26 September 2003.

## State Rankings

## Region VII

**2000**

**2001**

- |  |   |
|--|---|
| <ul style="list-style-type: none"> <li>• Missouri 12.7 n=699 20th</li> <li>• Kansas 12.2 n=325 23rd</li> <li>• Nebraska 11.6 n=137 25th</li> <li>• Iowa 10.0 n=289 39th</li> </ul> | <ul style="list-style-type: none"> <li>• Missouri 12.9 n=725 18<sup>th</sup></li> <li>• Nebraska 10.9 n=187 35<sup>th</sup></li> <li>• Kansas 10.8 n=293 36<sup>th</sup></li> <li>• Iowa 10.4 n=304 39th</li> </ul> |
|--|---|

**USA Total 10.7 N=29,350 35th & 36th**

**USA Total 10.8 N=30,622 36th & 37th**

Source: Arias, E., Anderson, R.N., Kung, H.C., Murphy, S.L., & Kochanek, K.D. (2003). Deaths: Final data for 2000 & 2001. National Vital Statistics Reports, 50 (15) & 52 (3). Hyattsville, MD: National Center for Health Statistics. [Data to be published in the CD-ROM entitled Vital Statistics of the United States Mortality, 2001.] (p. 91, Table 30. [data are by place of residence] [Suicide = ICD-10 Codes X60-X84, Y87.0] Prepared by John L. McIntosh, Ph.D. for American Association of Suicidology: Suicide State Data Page: 2001, 21 & 26 September 2002 & 2003.

## Region VIII

**2000**

**2001**

- |  |   |
|--|---|
| <ul style="list-style-type: none"> <li>• Montana 17.8 n=158 4th</li> <li>• Wyoming 17.3 n=83 5th</li> <li>• Colorado 14.8 n=613 7th</li> <li>• Utah 13.8 n=298 10th</li> <li>• S. Dakota 12.9 n=95 18th</li> <li>• N. Dakota 10.8 n=68 32nd</li> </ul> | <ul style="list-style-type: none"> <li>• Montana 19.3 n=175 2nd</li> <li>• Wyoming 16.8 n=83 4th</li> <li>• Colorado 16.3 n=722 5th</li> <li>• Utah 14.1 n=321 13th</li> <li>• S. Dakota 13.8 n=105 15th</li> <li>• N. Dakota 12.4 n=79 20th</li> </ul> |
|--|---|

**USA Total 10.7 N=29,350 35th & 36th**

**USA Total 10.8 N=30,622 36th & 37th**

Source: Arias, E., Anderson, R.N., Kung, H.C., Murphy, S.L., & Kochanek, K.D. (2003). Deaths: Final data for 2000 & 2001. National Vital Statistics Reports, 50 (15) & 52 (3). Hyattsville, MD: National Center for Health Statistics. [Data to be published in the CD-ROM entitled Vital Statistics of the United States Mortality, 2001.] (p. 91, Table 30. [data are by place of residence] [Suicide = ICD-10 Codes X60-X84, Y87.0] Prepared by John L. McIntosh, Ph.D. for American Association of Suicidology: Suicide State Data Page: 2001, 21 & 26 September 2002 & 2003.

## 2000

## 2001

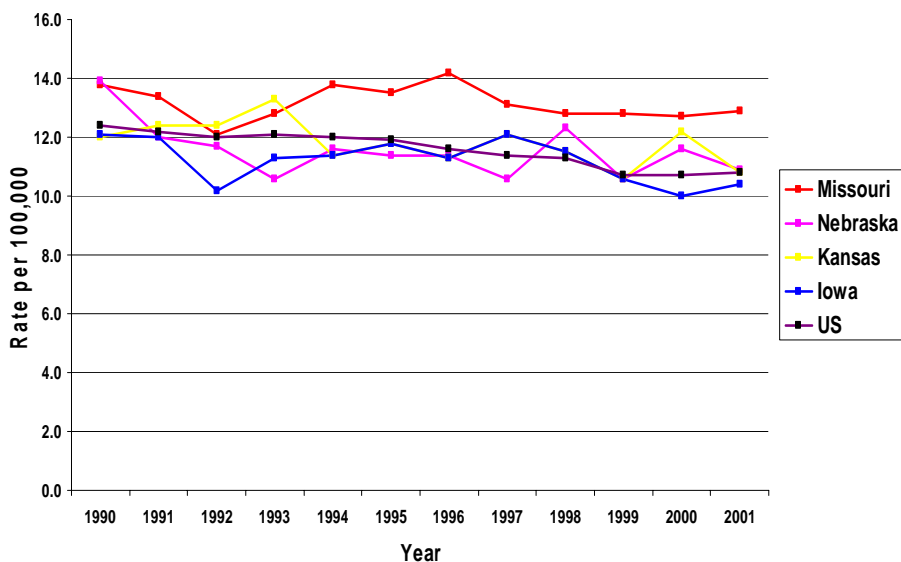
USA Total 10.7 N=29,350 35th

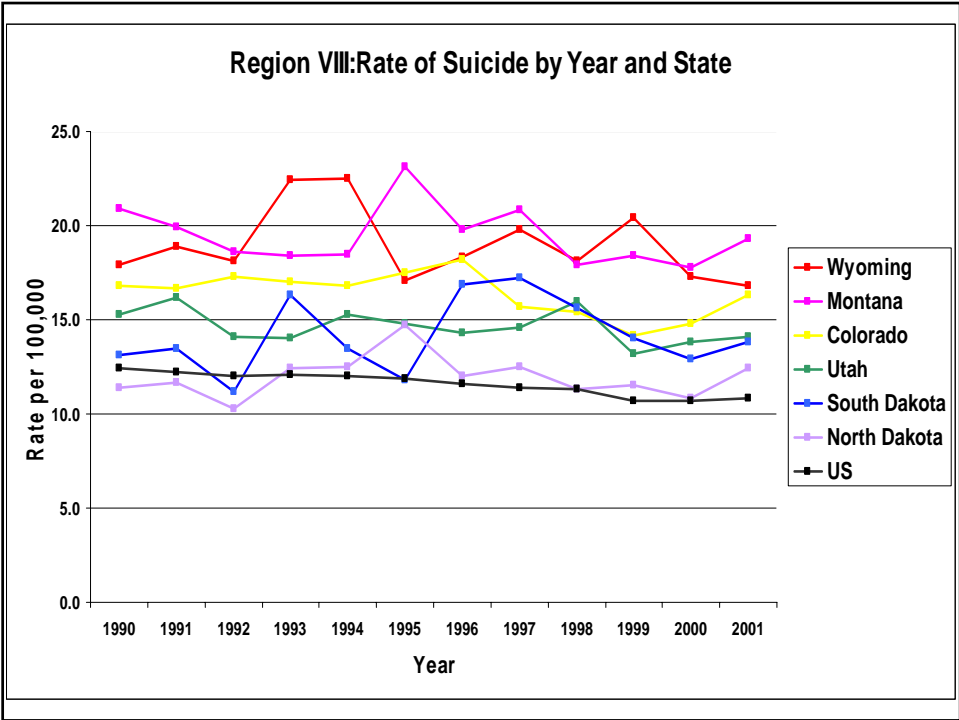
USA Total 10.8 N=30,622 36th

|             |      |       |      |             |      |       |      |
|-------------|------|-------|------|-------------|------|-------|------|
| • Montana   | 17.8 | n=158 | 4th  | • Montana   | 19.3 | n=175 | 2nd  |
| • Wyoming   | 17.3 | n=83  | 5th  | • Wyoming   | 16.8 | n=83  | 4th  |
| • Colorado  | 14.8 | n=613 | 7th  | • Colorado  | 16.3 | n=722 | 5th  |
| • Utah      | 13.8 | n=298 | 10th | • Utah      | 14.1 | n=321 | 13th |
| • S. Dakota | 12.9 | n=95  | 18th | • S. Dakota | 13.8 | n=105 | 15th |
| • Missouri* | 12.7 | n=699 | 20th | • Missouri* | 12.9 | n=725 | 18th |
| • Kansas*   | 12.2 | n=325 | 23rd | • N. Dakota | 12.4 | n=79  | 20th |
| • Nebraska* | 11.6 | n=137 | 25th | • Nebraska* | 10.9 | n=187 | 35th |
| • N. Dakota | 10.8 | n=68  | 32nd | • Kansas*   | 10.8 | n=293 | 36th |
| • Iowa*     | 10.0 | n=289 | 39th | • Iowa*     | 10.4 | n=304 | 39th |

Source: Arias, E., Anderson, R.N., Kung, H.C., Murphy, S.L., & Kochanek, K.D. (2003). Deaths: Final data for 2000 & 2001. National Vital Statistics Reports, 50 (15) & 52 (3). Hyattsville, MD: National Center for Health Statistics. [Data to be published in the CD-ROM entitled Vital Statistics of the United States Mortality, 2001.] (p. 91, Table 30. [data are by place of residence] [Suicide = ICD-10 Codes X60-X84, Y87.0] Prepared by John L. McIntosh, Ph.D. for American Association of Suicidology: Suicide State Data Page: 2001, 21 & 26 September 2002 & 2003.

### Region VII: Rate of Suicide by Year and State





## Individual States

# Montana

| Race         | Deaths             | Crude Rate   |
|--------------|--------------------|--------------|
| White        | 149/821,078        | 18.15        |
| Black        | 1/3,370            | 29.67        |
| AI/AK        | 8/57,829           | 13.83        |
| AS/PI        | 0/5,598            | 0.00         |
| <b>Total</b> | <b>158/887,875</b> | <b>17.80</b> |

CDC WISQUARS Injury Mortality Report  
Suicide Deaths and Rates per 100,000  
2000: All Races, Both Sexes, All Ages  
ICD-10 Codes: X60-X84, Y87.0

# Montana

| Sex      | Age   | Race  | Deaths    | Crude Rate |
|----------|-------|-------|-----------|------------|
| • Male   | 30-34 | White | 14/20,595 | 67.97      |
|          | 35-39 | White | 13/28,242 | 46.03      |
| • Female | 55-59 | White | 4/23,999  | 16.66      |
|          | 35-39 | White | 4/27,547  | 14.52      |

CDC WISQUARS Injury Mortality Report  
Suicide Deaths and Rates per 100,000  
2000: All Races, Both Sexes, All Ages  
ICD-10 Codes: X60-X84, Y87.0

# Wyoming

| Race         | Deaths            | Crude Rate   |
|--------------|-------------------|--------------|
| White        | 79/461,824        | 17.11        |
| Black        | 0/4,216           | 0.00         |
| AI/AK        | 4/10,824          | 36.95        |
| AS/PI        | 0/4,236           | 0.00         |
| <b>Total</b> | <b>83/480,900</b> | <b>17.26</b> |

CDC WISQUARS Injury Mortality Report  
Suicide Deaths and Rates per 100,000  
2000: All Races, Both Sexes, All Ages  
ICD-10 Codes: X60-X84, Y87.0

# Wyoming

| Sex      | Age   | Race  | Deaths   | Crude Rate |
|----------|-------|-------|----------|------------|
| • Male   | 50-54 | White | 8/16,808 | 47.59      |
|          | 45-49 | White | 9/19,982 | 45.04      |
| • Female | 35-39 | White | 3/14,394 | 20.84      |
|          | 40-44 | White | 3/18,527 | 16.19      |

CDC WISQUARS Injury Mortality Report  
Suicide Deaths and Rates per 100,000  
2000: All Races, Both Sexes, All Ages  
ICD-10 Codes: X60-X84, Y87.0

# Colorado

| Race         | Deaths             | Crude Rate   |
|--------------|--------------------|--------------|
| White        | 588/3,811,195      | 15.43        |
| Black        | 15/180,971         | 8.29         |
| AI/AK        | 4/38,262           | 10.45        |
| AS/PI        | 6/106,187          | 5.65         |
| <b>Total</b> | <b>613/4136615</b> | <b>14.82</b> |

CDC WISQUARS Injury Mortality Report  
Suicide Deaths and Rates per 100,000  
2000: All Races, Both Sexes, All Ages  
ICD-10 Codes: X60-X84, Y87.0

# Colorado

| Sex      | Age   | Race  | Deaths     | Crude Rate |
|----------|-------|-------|------------|------------|
| • Male   | 40-44 | White | 62/171,535 | 36.14      |
|          | 45-49 | White | 57/159,619 | 35.71      |
| • Female | 45-49 | White | 21/160,579 | 13.08      |
|          | 25-29 | White | 11/116,159 | 9.46       |

CDC WISQUARS Injury Mortality Report  
Suicide Deaths and Rates per 100,000  
2000: All Races, Both Sexes, All Ages  
ICD-10 Codes: X60-X84, Y87.0

# Utah

| Race         | Deaths               | Crude Rate   |
|--------------|----------------------|--------------|
| White        | 289/2,056,139        | 14.06        |
| Black        | 2/20,347             | 9.83         |
| AI/AK        | 4/30,615             | 13.07        |
| AS/PI        | 3/57,505             | 5.22         |
| <b>Total</b> | <b>298/2,164,606</b> | <b>13.77</b> |

CDC WISQUARS Injury Mortality Report  
Suicide Deaths and Rates per 100,000  
2000: All Races, Both Sexes, All Ages  
ICD-10 Codes: X60-X84, Y87.0

# Utah

| Sex      | Age   | Race  | Deaths     | Crude Rate |
|----------|-------|-------|------------|------------|
| • Male   | 20-24 | White | 29/105,282 | 27.55      |
|          | 15-19 | White | 22/98,238  | 22.39      |
| • Female | 35-39 | White | 14/63,402  | 22.08      |
|          | 30-34 | White | 10/61,570  | 16.24      |

CDC WISQUARS Injury Mortality Report  
Suicide Deaths and Rates per 100,000  
2000: All Races, Both Sexes, All Ages  
ICD-10 Codes: X60-X84, Y87.0

## South Dakota

| Race         | Deaths            | Crude Rate   |
|--------------|-------------------|--------------|
| White        | 80/664,812        | 12.03        |
| Black        | 1/5,747           | 17.40        |
| AI/AK        | 14/61,614         | 22.72        |
| AS/PI        | 0/5,129           | 0            |
| <b>Total</b> | <b>95/737,302</b> | <b>12.88</b> |

CDC WISQUARS Injury Mortality Report  
Suicide Deaths and Rates per 100,000  
2000: All Races, Both Sexes, All Ages  
ICD-10 Codes: X60-X84, Y87.0

## South Dakota

| Sex    | Age   | Race  | Deaths    | Crude Rate |
|--------|-------|-------|-----------|------------|
| • Male | 30-34 | White | 10/19,111 | 52.32      |
|        | 70-74 | White | 5/11,421  | 43.77      |
| Female | 25-29 | White | 3/18,353  | 16.34      |
|        | 15-19 | White | 3/26,949  | 11.13      |

CDC WISQUARS Injury Mortality Report  
Suicide Deaths and Rates per 100,000  
2000: All Races, Both Sexes, All Ages  
ICD-10 Codes: X60-X84, Y87.0

# Missouri

| Race         | Deaths               | Crude Rate   |
|--------------|----------------------|--------------|
| White        | 660/4,790,986        | 13.78        |
| Black        | 37/624,777           | 5.92         |
| AI/AK        | 2/20,961             | 9.54         |
| AS/PI        | 0/65,465             | 0.00         |
| <b>Total</b> | <b>699/5,502,189</b> | <b>12.70</b> |

CDC WISQUARS Injury Mortality Report  
 Suicide Deaths and Rates per 100,000  
 2000: All Races, Both Sexes, All Ages  
 ICD-10 Codes: X60-X84, Y87.0

# Missouri

| Sex      | Age   | Race  | Deaths     | Crude Rate |
|----------|-------|-------|------------|------------|
| • Male   | 35-39 | White | 73/190,935 | 31.92      |
|          | 40-44 | White | 61/195,378 | 31.22      |
| • Female | 40-44 | White | 22/198,524 | 11.08      |
|          | 45-49 | White | 15/175,660 | 8.53       |

CDC WISQUARS Injury Mortality Report  
 Suicide Deaths and Rates per 100,000  
 2000: All Races, Both Sexes, All Ages  
 ICD-10 Codes: X60-X84, Y87.0

## North Dakota

| Race         | Deaths            | Crude Rate   |
|--------------|-------------------|--------------|
| White        | 60/587,977        | 10.20        |
| Black        | 1/4,488           | 22.28        |
| AI/AK        | 7/31,230          | 22.41        |
| AS/PI        | 0/5,610           | 0.00         |
| <b>Total</b> | <b>68/629,305</b> | <b>10.80</b> |

CDC WISQUARS Injury Mortality Report  
Suicide Deaths and Rates per 100,000  
2000: All Races, Both Sexes, All Ages  
ICD-10 Codes: X60-X84, Y87.0

## North Dakota

| Sex      | Age   | Race  | Deaths   | Crude Rate |
|----------|-------|-------|----------|------------|
| • Male   | 20-24 | White | 8/22,837 | 35.03      |
|          | 35-39 | White | 7/63,255 | 32.35      |
| • Female | 30-34 | AI/AK | 1/1,019  | 98.13      |
|          | 75-79 | White | 1/10,263 | 9.74       |

CDC WISQUARS Injury Mortality Report  
Suicide Deaths and Rates per 100,000  
2000: All Races, Both Sexes, All Ages  
ICD-10 Codes: X60-X84, Y87.0

# Nebraska

| Race         | Deaths               | Crude Rate   |
|--------------|----------------------|--------------|
| White        | 185/1,562,012        | 11.84        |
| Black        | 5/69,047             | 7.24         |
| AI/AK        | 1/15,405             | 6.49         |
| AS/PI        | 2/23,894             | 8.37         |
| <b>Total</b> | <b>193/1,670,358</b> | <b>11.55</b> |

CDC WISQUARS Injury Mortality Report  
Suicide Deaths and Rates per 100,000  
2000: All Races, Both Sexes, All Ages  
ICD-10 Codes: X60-X84, Y87.0

# Nebraska

| Sex      | Age   | Race  | Deaths    | Crude Rate |
|----------|-------|-------|-----------|------------|
| • Male   | 20-24 | White | 19/54,219 | 35.04      |
|          | 45-49 | White | 16/57,403 | 27.87      |
| • Female | 45-49 | White | 5/57,500  | 8.69       |
|          | 35-39 | White | 5/58,210  | 8.58       |

CDC WISQUARS Injury Mortality Report  
Suicide Deaths and Rates per 100,000  
2000: All Races, Both Sexes, All Ages  
ICD-10 Codes: X60-X84, Y87.0

# Kansas

| Race         | Deaths               | Crude Rate   |
|--------------|----------------------|--------------|
| White        | 311/2,434,383        | 12.78        |
| Black        | 10/157,628           | 6.34         |
| AI/AK        | 1/23,758             | 4.20         |
| AS/PI        | 3/50,121             | 5.99         |
| <b>Total</b> | <b>325/2,665,890</b> | <b>12.19</b> |

CDC WISQUARS Injury Mortality Report  
Suicide Deaths and Rates per 100,000  
2000: All Races, Both Sexes, All Ages  
ICD-10 Codes: X60-X84, Y87.0

# Kansas

| Sex      | Age   | Race  | Deaths     | Crude Rate |
|----------|-------|-------|------------|------------|
| • Male   | 45-49 | White | 27/89,258  | 30.25      |
|          | 40-44 | White | 27/101,499 | 26.60      |
| • Female | 45-49 | White | 11/90,180  | 12.19      |
|          | 40-44 | White | 9/98,792   | 9.11       |

CDC WISQUARS Injury Mortality Report  
Suicide Deaths and Rates per 100,000  
2000: All Races, Both Sexes, All Ages  
ICD-10 Codes: X60-X84, Y87.0

# Iowa

| Race          | Deaths               | Crude Rate   |
|---------------|----------------------|--------------|
| White         | 282/2,769,294        | 10.18        |
| Black         | 3/59,809             | 5.01         |
| AI/AK 1/8,974 | 11.14                | AS/PI        |
| 3/32,219      | 7.65                 |              |
| <b>Total</b>  | <b>289/2,877,296</b> | <b>10.04</b> |

CDC WISQUARS Injury Mortality Report  
Suicide Deaths and Rates per 100,000  
2000: All Races, Both Sexes, All Ages  
ICD-10 Codes: X60-X84, Y87.0

# Iowa

| Sex      | Age   | Race  | Deaths     | Crude Rate |
|----------|-------|-------|------------|------------|
| • Male   | 35-39 | White | 34/100,827 | 33.72      |
|          | 15-19 | White | 25/108,674 | 23.00      |
| • Female | 30-34 | White | 6/88,110   | 6.80       |
|          | 45-49 | White | 7/103,341  | 6.77       |

CDC WISQUARS Injury Mortality Report  
Suicide Deaths and Rates per 100,000  
2000: All Races, Both Sexes, All Ages  
ICD-10 Codes: X60-X84, Y87.0

## Conclusion

- Use data with integrity.
- Be sure not to manipulate or alter data to make the case for addressing a health problem stronger.
- Use data selectively to make the best case.
- If there are discrepancies among sources of data, explain them.
- If you question the accuracy of the data or the methods used to collect the data, then discard the data.
- Always include the source of your data.

## Conclusion

- If data do not exist at the local level it is acceptable to identify that it does not exist and to discuss it.
- Also, it is acceptable to discuss if data are not collected presently in a manner that is useful to the disease or condition.
- You can incorporate more appropriate data collection techniques into your prevention or intervention efforts.