

Guided Team Planning

Ginny Carpenter, MEd
Trinity Christian College
Laurie Davidson, MA
SPRC

Campus Suicide Prevention
Grantee Technical Assistance Meeting
January 6-9, 2009
Phoenix, AZ

Cohort 1 Quotes

“Be open to making changes throughout the process – what was originally proposed may not be the best route.”

“Start slowly and take time to think out/plan out your initiatives. Leave room to change what you do as you’ll likely have to do so.”

“Don’t take it personally, but some will present barriers to your efforts.”

Goals

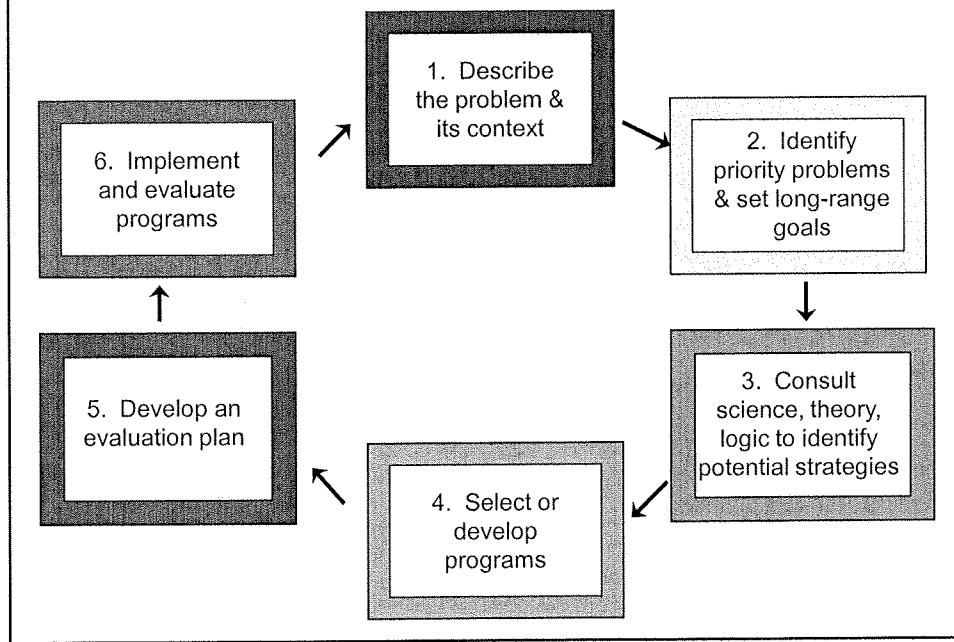
- ❖ Synthesize learnings from workshops
- ❖ Keep your eye on your goals
 - ❖ Cohort 3: Refining initial plans
 - ❖ Cohort 2: Sustaining suicide prevention
- ❖ Choose remaining workshops strategically

Agenda

- ❖ Remembering what you set out to do
 - ❖ A grantee perspective
 - ❖ Exercise: Strengthening your goals

Remembering What You Set Out to Do

Strategic Planning Process



Refining Suicide Prevention Plans

- Clarify the program
 - Focus on desired changes
 - Get specific
 - Achieve internal agreement
 - Communicate program to others
- Use as basis for evaluation plan
- Enhance sustainability

Sustaining Suicide Prevention

- Program continuation more likely when:
 - Components are conceptually clear
 - Evaluation demonstrates positive changes
- Use logic models to:
 - Get additional partners/funding sources on board
 - Facilitate grant-writing
 - Ask for specific support & justify it

Typical Suicide Program Goals

- Decrease deaths by suicide
- Decrease suicide attempts
- Decrease suicidal ideation
- Decrease injuries from suicide attempts

AND

- Decrease risk factors
- Increase protective factors

Team Exercise: Making Adjustments



Team Planning Worksheet

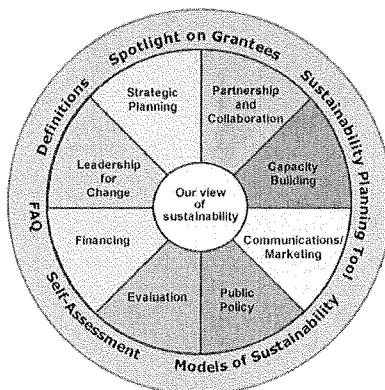
Cohort 3: Brainstorm

- Based on:
 - Logic model exercise; and
 - Workshops/sessions you attended....
- How can you strengthen your strategic plan to increase the likelihood of achieving desired *changes*?
 - Problem definition < Goals > Strategies/Activities

Cohort 2: Brainstorm

- How can you strengthen your strategic plan to maintain the *changes* you've achieved?
- How will these support the sustainability of *suicide prevention* on your campus?

Elements of Sustainability



Everyone!

- Next Steps
 - Translate these ideas into tasks
 - Be concrete; name behaviors or actions
- What help (“technical assistance”) can we provide?

Cohort 1 Quotes

“One of the lessons learned is a need to allow for project development and implementation time at the beginning of the grant period.”

“Take the first year to develop strategic liaisons and partnerships so that project goals can be implemented with campus support”

Team Observations

Cohort 1 Quotes

“Be realistic in your goals and objectives, but also dare to think big.”

“Identify 2-3 beliefs that you are passionate about and build your program and vision around those beliefs. Your passion will push through all the hard work and obstacles.”