

The Garrett Lee Smith  
Memorial  
Suicide Prevention Evaluation  
Campus Programs

*Grantee Orientation Meeting  
Washington, D.C  
January 17-19, 2007*

Session Purpose

**Implementation of the Cross-site Evaluation**

**What have we accomplished over the last year?**

**What can expect in the upcoming year?**

**What questions still need answers?**

## Session Overview

1. Clear up any confusion related to how the cross-site evaluation supports:
  - SAMHSA annual reporting requirements
  - GPRA and NOM reporting requirements
2. OMB Update and Revised cross-site evaluation timeline
3. Discuss each data collection activity:
  - Progress made to date
  - Expectations for the future
4. Review Grantee Summary Reports sample
  - Your feedback

## Clearing Up The Confusion

DRAFT 6/26/06

Campus Suicide Prevention Grant Program  
Annual Report Template  
*Instructions*

The purpose of the Annual Report is to provide information to SAMHSA regarding programmatic progress and how you have used grant and matching funds to pursue your programmatic objectives during this reporting year. SAMHSA will use this information to monitor your progress and provide assistance, as needed, to ensure that Federal dollars are spent appropriately, and to inform Congress regarding progress in the Garrett Lee Smith Memorial suicide prevention program.

We do not want this report to be burdensome. We ask for *summary information* as well as key activities, major barriers encountered, and progress achieved during the project year. We have coordinated closely with ORC Macro to ensure that you will not need to input the same data for the cross-site evaluation and this annual report. To assist you in completing this report and to provide SAMHSA with a summary of grant-funded activities, please refer to and attach this grant year's *Product and Service Inventory Summary Report*, which ORC Macro compiled from your program's responses to the cross-site evaluation. You can access that report from the cross-site evaluation Web site (<http://www.uxxxxxxxxxxxxxx>).

If you have any questions, please contact your Government Project Officer, who will be

## SAMHSA Annual Report

### Campus Activity Report

Campus Activity Report  
[Name of Campus]  
[Date of Report]

The purpose of this report is to summarize information submitted as part of the cross-site evaluation Product and Services Inventory and Training Activity Report for submittal to SAMHSA regarding programmatic progress and use of grant funds.

Program Activities

Activity #1 - Training Programs

Total Unduplicated Number of Trainings conducted: \_\_\_\_\_

Total Unduplicated Number of Training Participants: \_\_\_\_\_

Number of Participants Trained by Demographic Group

	Type of Training Program		
	Name of Training:	Name of Training:	Name of Training:
<b>Students:</b>			
Students			
Family members			
<b>Total</b>			
<b>Faculty/Staff</b>			
Faculty			
Staff (e. g., Academic Affairs)			

# GPRA and NOMs Crosswalk

## SAMHSA National Outcome Measure Crosswalk with the Cross-site Evaluation of the GLS Suicide Prevention and Early Intervention Program

NOMs DOMAIN	Proposed Outcome Measure	CLIENT LEVEL	CROSS-SITE EVALUATION CAMPUS DATA SOURCE
<b>CLIENT LEVEL OUTCOMES</b>			
<b>Access/ Capacity</b>	Increased Access to Services <ul style="list-style-type: none"> <li>• Use of emergency services</li> <li>• Use of mental health services</li> </ul>	<b>Secondary data</b>	Campuses will annually submit from existing data systems data on student use of emergency services and student use of mental health services.
<b>Education Retention</b>	Student Retention Rate	<b>Secondary data</b>	Campuses will annually submit from existing data systems data on student retention.
<b>TRAINING RELATED OUTCOMES</b>			
<b>Implement Training to Identify At Risk Behavior</b>	Increase in the number of gatekeepers trained in suicide risk factor awareness	<b>TAR</b>	The <b>TAR</b> will be used to measure the aggregate number of gatekeepers in GLS-funded campuses who have received training.
<b>INFRASTRUCTURE DEVELOPMENT OUTCOMES</b>			
<b>Promote Awareness</b>	Increase in number of GLS-funded Campuses with suicide prevention public information campaigns	<b>PSI</b>	The <b>PSI</b> will document all public information products and services that were implemented as part of each grantees suicide prevention program.
	Increase in the number of GLS-funded Campuses disseminating suicide prevention information via the World Wide Web	<b>PSI</b>	The <b>PSI</b> will document all public information efforts that involve website development or enhancements for the purposes of disseminating suicide prevention information.
<b>Develop and Implement Prevention Programs</b>	Increase in the number of GLS-funded colleges and universities with evidence-based suicide prevention programs	<b>PSI</b>	The <b>PSI</b> will be used to document the programs that have been implemented as part of the campus GLS program, and whether the programs are evidence-based.
	Increase in the number of family, youth and community service providers affiliated with GLS-funded Campuses using evidence-based suicide prevention programs	<b>TAR</b>	The <b>TAR</b> will be used to measure the aggregate number of gatekeepers by type in GLS-funded campuses who have received training in evidence-based programs.
<b>Improve and Expand Surveillance Systems</b>	Increase in the number of GLS-funded States that produce annual reports on suicide and suicide attempts, integrating data from multiple data management systems	<b>Annual needs assessment</b>	An annual needs assessments will be conducted with grantees to document evaluation progress. These reports will include an assessment of whether GLS-related program data are integrated from multiple data management systems and whether these data are utilized in annual reports.

Key: **PSI** - Product and Services Inventory

OMB Update

## REVISED Cross-site Evaluation Data Collection Timeline Cohort 1 GLS Campus Grantees

<b>January 1, 2007 – December 31, 2007</b>	
<b>January 2007</b>	Review incentive plans submitted in December 2006 Finalize SPEAKS-Student sampling plans and submit to liaison Training Activity Report data submittal continues
<b>February 2007</b>	Submit SPEAKS-Student samples to liaison by February 15, 2007 Finalize SPEAKS-Faculty/Staff sampling plans (if necessary) Training Activity Report data submittal continues
<b>March 2007</b>	SPEAKS-Student administration begins Submit SPEAKS-Faculty/Staff samples to liaison by March 15, 2007 Existing Database Inventory (EDI) administration begins (once OMB approval is received March 31: Last day to submit Training Activity Report data for Quarter 2
<b>April 2007</b>	Product and Services Inventory (PSI) baseline administration begins (15 days) Grantee Summary Report made available Training Activity Report data submittal continues SPEAKS-Faculty/Staff administration begins
<b>May 2007</b>	Training Activity Report data submittal continues Request for secondary data as part of the MIS data extraction and submission process begins
<b>June 2007</b>	June 30: Last day to submit Training Activity Report data for Quarter 3
<b>July 2007</b>	PSI follow-up administration begins (2 <sup>nd</sup> administration) (15 days) Grantee Summary Report made available Training Activity Report data submittal continues
<b>August 2007</b>	Secondary data submitted to technical assistance liaison Campus Infrastructure Interview samples submitted to technical assistance liaison Training Activity Report data submittal continues

## Data Collection Activities

## Training Activity Report (TAR)

### TAR Facts

- **Purpose:** To identify the types of training/educational activities being conducted, and the characteristics of those trained, across campuses
- **Three parts to TAR**
  1. **Number and type of training/educational activities (aggregate & unduplicated)**
  2. **Count of participants per training (aggregate & unduplicated)**
  3. **Participants demographic characteristics by training: gender, race/ethnicity, role (aggregate)**

## Training Activity Report (TAR)

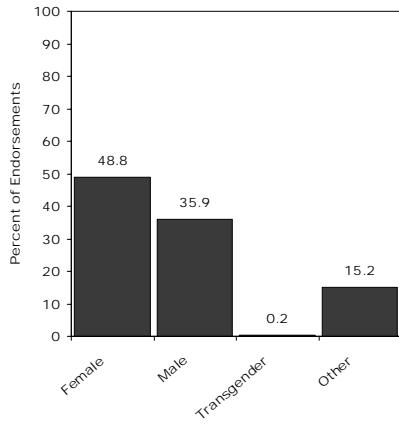
### Trainings to Date

- **19/21 campuses have submitted TAR data so far**
- **315 trainings have been conducted**
- **10,025 participants have been trained (this may represent a duplicated count of participants)**
- **32 participants per training on average**

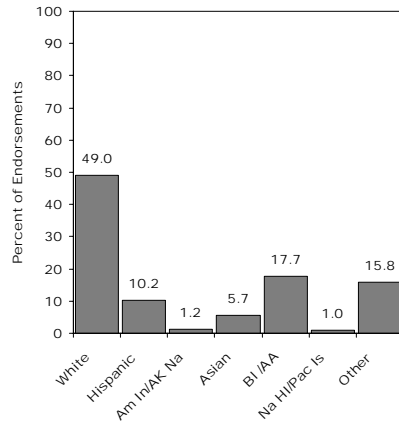
### Examples of Trainings Conducted

**Making Connections, QPR, Campus Connect, ASIST, Orientations, Counseling Center Services, Cultural Competency, Education & Empowerment, Helping Skills, MBSR, Stress Management/Reduction/Solutions, Students in Distress**

## Preliminary TAR Findings: Gender & Race/Ethnicity

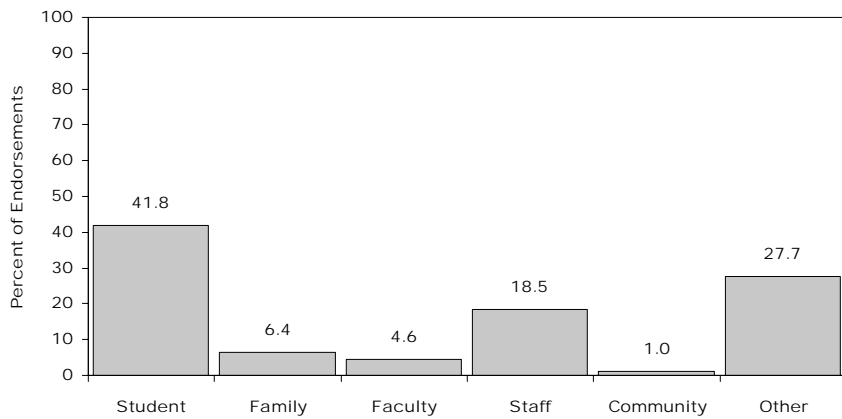


Gender (n=7443)



Race/Ethnicity (n=4598)

## Preliminary TAR Findings: Role



Role (n=8440)

## Training Activity Report (TAR)

TIMELINE	
<b>Submission Guidelines</b>	Recommend ongoing data entry (within 30 days)
<b>Last Day to Submit Data</b>	FY Quarter 1: December 31 FY Quarter 2: March 31 FY Quarter 3: June 30 FY Quarter 4: September 30

## SPEAKS Student and Faculty/Staff

### **SPEAKS Facts**

- **Purpose: Assess campus-level suicide prevention exposure, awareness, and knowledge from representative samples using a cross-sectional design**
- **Campuses must submit respondent email addresses**
- **Desired sample sizes: 200 Students and 50 Faculty/Staff**
- **Over recruitment recommended**

## SPEAKS – Student Version

### Examples of Incentive Plans Reported

- Gift certificates (Campus book store, Amazon, American Express, Hallmark)
- Cashiers checks (\$100 for 10 students to \$500 for 2 students)
- iPods (various models, 4 per campus)
- \$5 to each student who participates
- Movie passes

### Sampling Plans

- Majority of campuses using recommended three strata

## SPEAKS – Student Version

<b>2007 TIMELINE</b>	
Before Winter Break 2006	Incentive/Sampling plans due to liaison
February 15, 2007	Student respondent lists due to liaison
March 7, 2007	SPEAKS – Student administration 1 begins
<b>2008 TIMELINE</b>	
Before Winter Break 2007	Incentive plans due to liaison (if changed)
February 15, 2008	Student respondent lists due to liaison
March 1, 2008	SPEAKS – Student administration 2 begins

## SPEAKS – Faculty/Staff Version

<b>2007 TIMELINE</b>	
February 15, 2007	Sampling plans due to liaison
March 15, 2007	Faculty/Staff respondent lists due to liaison
April 1, 2007	SPEAKS – F/S administration 1 begins
<b>2008 TIMELINE</b>	
February 15, 2008	Faculty/Staff respondent lists due to liaison
March 1, 2008	SPEAKS – F/S administration 2 begins

## Existing Database Inventory (EDI)

### EDI Facts

- **Purpose:** Identify the extent to which data sources exist that contain elements potentially relevant to suicide prevention
- **Three sections**
  1. Identify MIS and electronic databases that support program
  2. Identify degree of data integration among systems
  3. Identify grantee's ability to access data

<b>TIMELINE</b>	
March 1-30, 2007	EDI administration 1 begins (30-day window to complete)
December 1-30, 2007	EDI administration 2 begins (30-day window to complete)

## MIS Data Abstraction and Submission

### MIS Facts

- Information from the EDI will inform MIS abstraction
- Required annual reporting on three NOM/GPRA data elements
  - Use of emergency services by students
  - Student retention rates
  - Total number of students who receive mental health services
- Additional data elements may include the number of students referred to mental health services, follow-up to services, hotline monitoring, referrals to on-campus mental health services vs. community mental health services

## MIS Data Abstraction and Submission

<b>2007 TIMELINE</b>	
March 2007	EDI administration 1 begins
May 2007	Request for secondary data from existing databases
June/July 2007	Template provided Work with TAL to identify data source
August 2007	MIS data submission of required elements
<b>2008 TIMELINE</b>	
December 2007	EDI administration 2 begins
May 2008	Request for secondary data from existing databases
June/July 2008	Template provided Work with TAL to identify data source
August 2008	MIS data submission of required elements

## Product and Services Inventory (PSI)

### PSI Facts

- Catalogues development and use of products and services as part of program
- Real-time summary tables available for viewing and downloading
- Informs SAMHSA Annual Report

<b>2007 TIMELINE</b>	
Quarterly Submissions (15 days to complete)	FY Quarter 2: April 1-15, 2007 FY Quarter 3: July 1-15, 2007 FY Quarter 4: October 1-15, 2007
<b>2008 TIMELINE</b>	
Quarterly Submissions (15 days to complete)	FY Quarter 1: January 1-15, 2008 FY Quarter 2: April 1-15, 2008 FY Quarter 3: July 1-15, 2008 FY Quarter 4: September 15-30, 2008

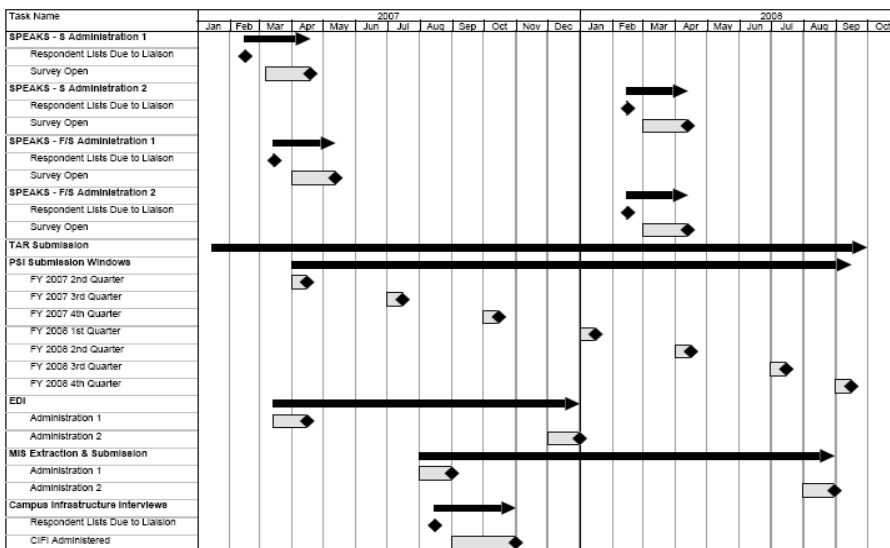
## Campus Infrastructure Interviews (CIFI)

### CIFI Facts

- One-time key informant interviews
- Conducted by cross-site evaluation team
- Five respondent categories (Administrator, Student Leader, 2 Faculty, Counseling Center Staff)
- Appropriate respondents are knowledgeable of campus policies, procedures and activities
- May be necessary to obtain consent to contact

<b>TIMELINE</b>	
August 2007	Respondent lists submitted to TAL by campus
September to October 2007	CIFI administration by cross-site evaluation team

## Updated Campus Timeline



## Grantee Summary Reports

*Templates and Feedback*