

# The Garrett Lee Smith Memorial Suicide Prevention Evaluation

Grantee Orientation  
Meeting  
Washington, D.C  
December 13-15,  
2005

## Topics to Cover in Brief

- I. Who is ORC Macro and what is their role?
- II. What is the overarching approach to the Cross-site Evaluation?
- III. What questions will be answered through Cross-site Evaluation activities?
- IV. What are main components of the Cross-site Evaluation?
- V. What are the data collection approaches being used in the State/Tribal and Campus Programs?
- VI. What are the Cross-site Evaluation implementation supports available to funded sites?

# Who is ORC Macro?

## Corporate Background

- Management & consulting research organization
- Contracts with Local, State, & Federal governments comprise 80–90% of work
  - Over 1200 employees
  - Multiple office locations in the U.S. & overseas
- Over 30-year history as a government contractor
  - Applied health services research
  - Information technology
  - Organizational development
  - Communications

## Related Experience

- NCTSI Cross-site Evaluation (CMHS)
- National Evaluation of the Comprehensive Community Mental Health Services for Children and Their Families Program (CMHS)
- Cross-Site Evaluation of Community Coalition Partnership Programs for the Prevention of Teen Pregnancy (CDC)
- Evaluation of High Risk Youth Substance Abuse Prevention Initiative (CSAP)
- National Evaluation of Prevention Research Centers Program (CDC)

# What is ORC Macro's Role?

*ORC Macro was CONTRACTED to implement a national Cross-site Evaluation with grantees funded under the Garrett Lee Smith Memorial Suicide Prevention Initiative.*

Specifically:

- Gather information from State/Tribal and Campus grantees
- Provide training and technical assistance around local implementation of the Cross-site Evaluation
- Summarize information in a format that can be utilized to further the field of suicide prevention

## Suicide Prevention Cross-site Evaluation Approach

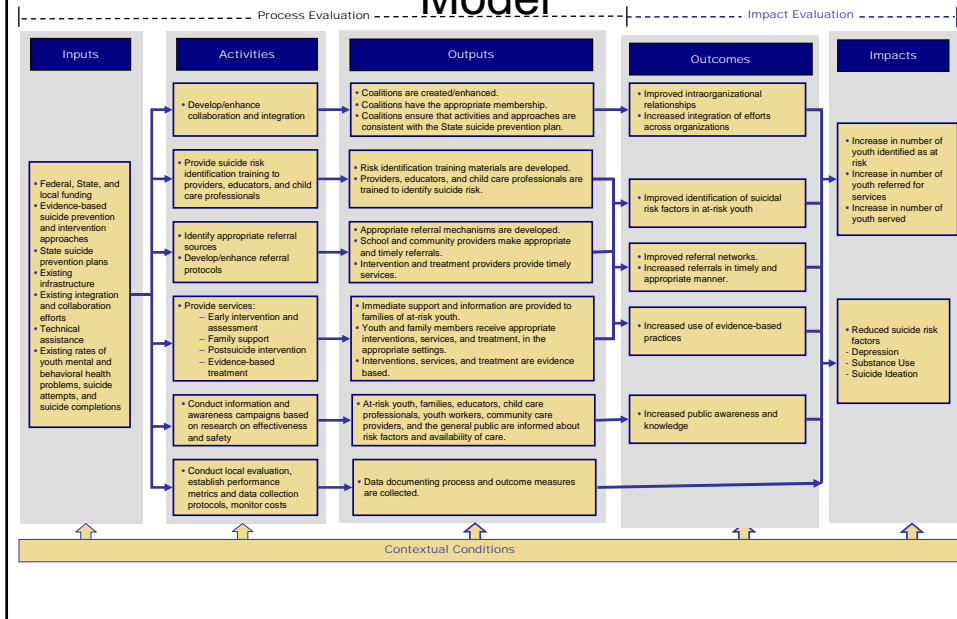
- Collaborative
- Capacity building
- Utilization- and outcome-focused
- Multi-method, multi-level, multi-perspective
- Burden reducing
- Efficiency enhancing
- Relevant to policy makers and constituents
- Research integrity

## Suicide Prevention Evaluation Overarching Questions

- 1) What types of prevention/intervention programs, services and products are used with youth determined to be at risk for suicidal behavior?
- 2) What is the reach of program services, products, and strategies?
- 3) To what extent does collaboration and integration influence referral mechanisms and service use?
- 4) What is the impact of program services, products, and strategies on knowledge, process, and behavior?

# State/Tribal Youth Suicide Prevention and Early Intervention Program Evaluation

## State/Tribal Program Evaluation Logic Model



## Guiding Questions for the State/Tribal Program Evaluation

<b>Context</b>	What are the contextual features of each grantee's suicide prevention plan?
<b>Product</b>	What products and services are being developed, delivered, and utilized? <ul style="list-style-type: none"> <li>▪ What are the costs?</li> <li>▪ Are they consistent with originally proposed products and services?</li> <li>▪ Are evidence-based practices being utilized?</li> </ul>
<b>Process</b>	What is the penetration of training activities? <ul style="list-style-type: none"> <li>▪ Who and how many are trained?</li> <li>▪ What was their training experience?</li> <li>▪ To what extent is training knowledge being retained and utilized?</li> </ul> To what extent are agency stakeholders involved and interacting? <ul style="list-style-type: none"> <li>▪ What is the nature and quality of the interaction?</li> <li>▪ How does collaboration influence referral mechanisms &amp; service use?</li> <li>▪ What are facilitating and barrier factors?</li> </ul>
<b>Impact</b>	What is the impact of program activities? <ul style="list-style-type: none"> <li>▪ Who and how many at risk youth are identified, screened and referred?</li> <li>▪ Who and how many youth are following-up on referrals?</li> <li>▪ What are the immediate and long term outcomes of identified at risk youth referred for service? [feasibility assessment in progress]</li> </ul>

## State/Tribal Program Evaluation Studies and Data Collection Activities

### CONTEXT

- Grant proposal information abstraction & local logic model review
- Management Information System (MIS) & Existing Database Survey

### PRODUCT

- Products and Services Inventory

### PROCESS

- Training Process Study
- Screening, Training Utilization, and Penetration Study
- Referral Network Process Study

### IMPACT

- Screening, Identification, Referral and Follow-up Study
- Longitudinal Outcome Study of Youth Referred for Service  
**[feasibility assessment in progress]**

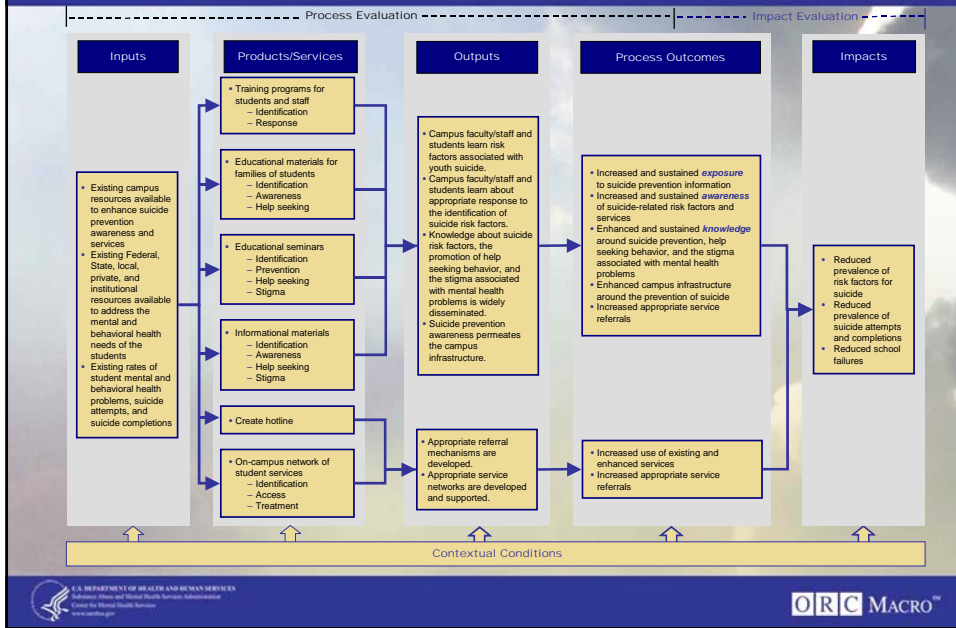
## The State/Tribal Enhanced Evaluation

*Through a collaborative effort between the SAMHSA and the CDC, three States/tribes will be selected to receive supplemental funding to develop an enhanced local evaluation in an effort to identify approaches, processes, and outcomes associated with successful implementation of the program.*

CDC Contact: Dr. Keri Lubell

## Campus Suicide Prevention Program Evaluation

## Campus Program Evaluation Logic Model



## Guiding Questions for the Campus Program Evaluation

<b>Context</b>	What are the contextual features for key activities of each grantee?
<b>Product</b>	What products and services are being developed, delivered, and utilized? <ul style="list-style-type: none"> <li>What are their costs?</li> <li>What audiences/populations are being targeted?</li> <li>Are they consistent with originally proposed products and services?</li> <li>What evidence-based practices are being utilized?</li> </ul>
<b>Process</b>	What is the overall level of suicide prevention awareness and knowledge among campus staff/faculty and students? <ul style="list-style-type: none"> <li>Does it vary as a function of targeted activities?</li> <li>Does it vary as a function of products/services developed?</li> <li>Does it vary as a function of student and faculty characteristics?</li> <li>How does the suicide prevention infrastructure develop and evolve over time?</li> </ul>
<b>Impact</b>	What is the impact of program activities? <ul style="list-style-type: none"> <li>How many students are being referred for mental health services?</li> <li>How many students receive mental health services?</li> <li>How many students are accessing crisis support services?</li> </ul>

## Campus Program Evaluation Studies and Data Collection Activities

### CONTEXT

- Grant proposal information abstraction
- Management Information System (MIS) & Existing Database Survey

### PRODUCT

- Products and Services Inventory

### PROCESS

- Suicide Prevention Exposure, Awareness, and Knowledge Survey
- Suicide Prevention Infrastructure Study

### IMPACT

- Use of information contained within existing MIS and other databases to track and assess crisis and mental health service referral and access

## Summary of Key Suicide Prevention Evaluation Activities and Measures

Stages of Information Gathering	State-Sponsored/Tribal Youth Suicide Prevention and Early Intervention Program	Campus Suicide Prevention Program
Context	<ul style="list-style-type: none"> <li>• Review of funded grant proposals</li> <li>• Management Information System (MIS) and Existing Database Survey</li> </ul>	<ul style="list-style-type: none"> <li>• Review of funded grant proposals &amp; program logic models</li> <li>• Management Information System (MIS) and Existing Database Survey</li> </ul>
Product	<ul style="list-style-type: none"> <li>• Product and services inventory</li> </ul>	<ul style="list-style-type: none"> <li>• Product and services inventory</li> </ul>
Process	<ul style="list-style-type: none"> <li>• Training Exit Survey</li> <li>• Follow-up Training Survey</li> <li>• Referral Network Survey</li> </ul>	<ul style="list-style-type: none"> <li>• Suicide Prevention Exposure, Awareness, and Knowledge Survey of students and staff</li> <li>• Campus suicide prevention infrastructure assessment</li> </ul>
Impact *	<ul style="list-style-type: none"> <li>• Screening, Identification, Referral and Follow-up Survey</li> <li>• Longitudinal Outcome Study of Youth Referred to Service                             <ul style="list-style-type: none"> <li>• Depression</li> <li>• Suicidal Ideation</li> <li>• Substance Dependency</li> <li>• Satisfaction with Services</li> </ul> </li> </ul>	<ul style="list-style-type: none"> <li>• Information contained within existing MIS and other databases to monitor crisis and mental health service referral and access</li> </ul>

*\* NOTE: Enhanced local evaluation activities will be occurring in three State-sponsored/Tribal sites to be determined.*

## Implementation Supports

### Training & Technical Assistance

- Technical assistance liaisons (TAL)
- Evaluation and resource needs assessment
- Webcast Trainings
- Site visits
- Grantee meeting workshops
- Resources and materials distributed and posted

## Data Collection and Information Technology

- Web-enabled surveying
- Electronic Data Repository (data entry & management)
- ListServ
- Webcasts
- SharePoint

## Cross-site Evaluation Contacts

### SAMHSA

*Government Project Officer:*

Richard McKeon

[Richard.McKeon@samhsa.hhs.gov](mailto:Richard.McKeon@samhsa.hhs.gov)

### Cross-site Evaluation Team

*Project Director:*

Christine Walrath, [Christine.M.Walrath-Greene@orcmacro.com](mailto:Christine.M.Walrath-Greene@orcmacro.com)

*Assistant Project Director:*

Angela Sheehan, [Angela.K.Sheehan@orcmacro.com](mailto:Angela.K.Sheehan@orcmacro.com)